



112 FINCHLEY ROAD
LONDON NW3 5HT
INFO@RHWESTATES.CO.UK
020 7431 7121

WWW.RHWESTATES.CO.UK



11 ASHWIN STREET

LONDON
E8 3DL

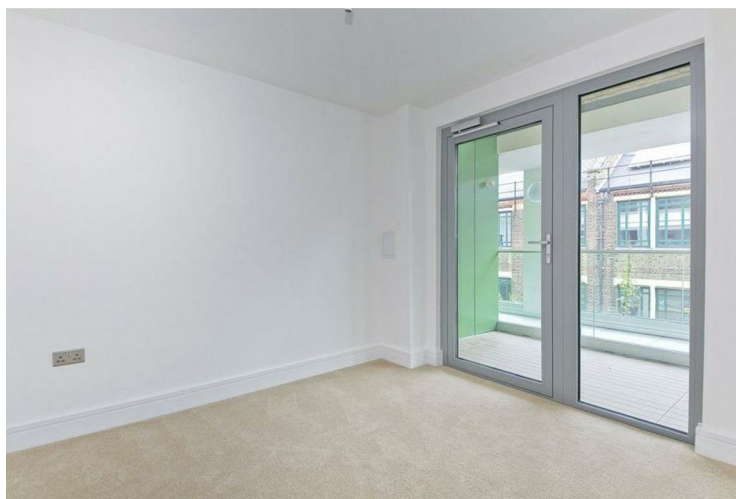
PCM £2,700 PCM
SUBJECT TO CONTRACT

A large two bedroom apartment forming part of the exciting new Dalston Curve development.

Accommodation comprises; open-plan kitchen/reception, two double bedrooms and two contemporary bathrooms. The property further benefits from wood flooring, good storage and access to the dual aspect roof terrace on the fifth floor.

Nearby transport links include Dalston Junction station as well as Dalston Kingsland station and the many buses of Kingsland Road which offer a quick and direct route into the City.

The property is now furnished.



FEATURES

VIDEO TOUR:

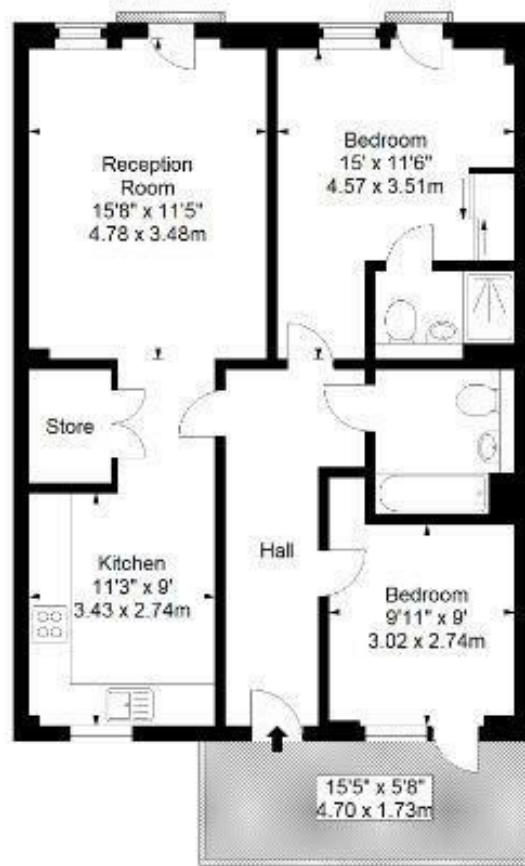
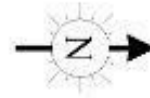
SERVICE CHARGE: £

TENURE:

COUNCIL TAX: D

Ashwin Street, E8

Approx. Gross Internal Area *
772 Ft² - 71.72 M²



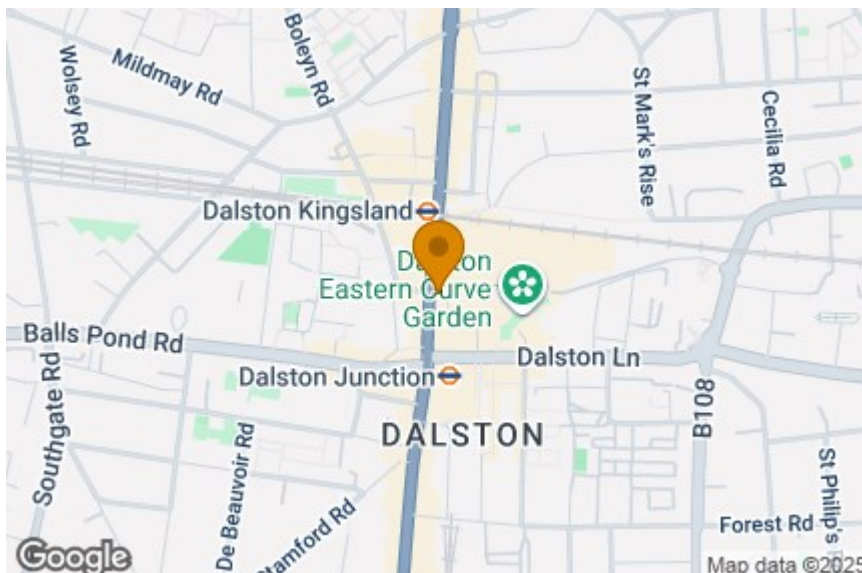
Third Floor

Every attempt has been made to ensure the accuracy of this floor plan however, measurements are approximate and for illustration purposes only. Measured in accordance with the RICS code of measuring practice. Not to scale

© Inside Photography Ltd.

Tel 07850 620 122 , 0207 263 2188

www.ipinteriors.co.uk



Energy Efficiency Rating		
	Current	Potential
Very energy efficient - lower running costs		
(92 plus) A		
(81-91) B	85	85
(69-80) C		
(55-68) D		
(39-54) E		
(21-38) F		
(1-20) G		
Not energy efficient - higher running costs		
England & Wales	EU Directive 2002/91/EC	



IMPORTANT NOTICE

Whilst every attempt has been made to ensure the accuracy of these details and floor plans contained here, measurements of doors, windows and rooms are approximate and no responsibility is taken for any error, omission or mis-statement. These plans and details are for representation only as defined by RICS code of measuring practice and should be used as such by any prospective purchaser.

Not to scale. Copyright: RHW Estates